

### THROTTLE AND CHOKE SHAFT REPAIR KITS

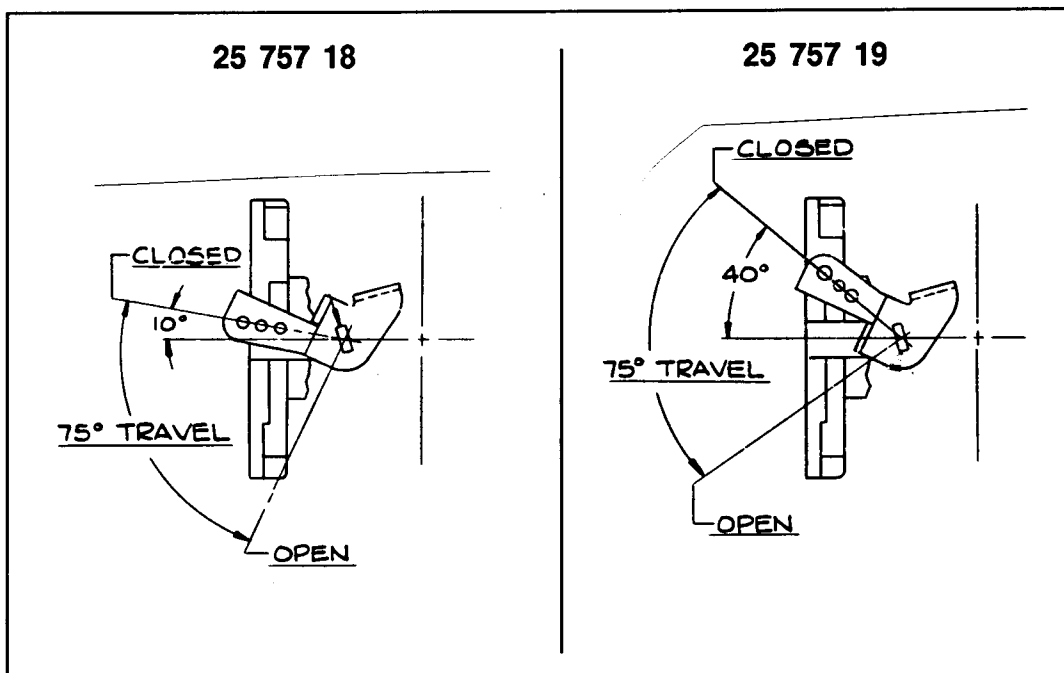
The 25 757 04 and 25 757 05 throttle and choke shaft repair kits are being discontinued. Stock of these kits is to be used. When stock is depleted they will be replaced by the following individual shaft kits.

Throttle Kits	Choke Kits
25 757 14	25 757 20
25 757 15	25 757 21
25 757 16	
25 757 17	
25 757 18	
25 757 19	

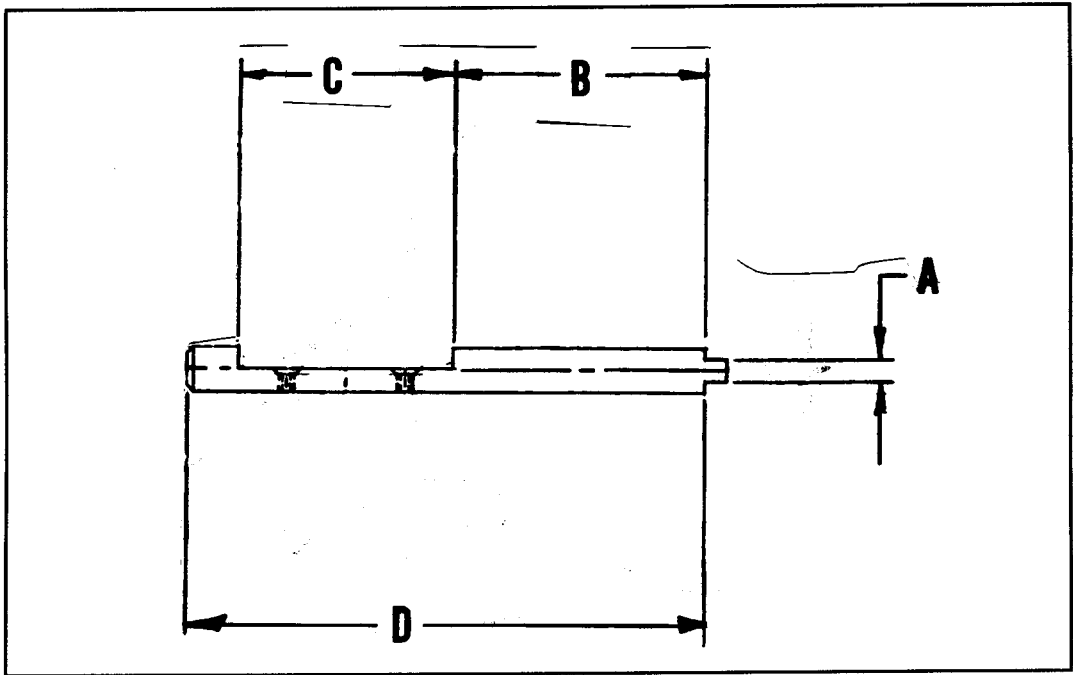
NOTE: When repairing your carburetor with a throttle and/or choke repair kit, we recommend you also order and install a carburetor repair kit. (25 757 01 or 25 757 02 depending on your carburetor number.)

There are two choke shaft repair kits. 25 757 20 is to repair 1/2" carburetors. 25 757 21 is to repair 1" carburetors. There are six throttle shaft repair kits. Two are to repair 1/2" carburetors. Four are to repair 1" carburetors.

For 1/2" carburetors determine which kit you need by matching your throttle shaft with the illustration below:



For 1" carburetors determine which kit you need by measuring your throttle shaft as shown below:



1" Throttle Shaft Kit Numbers	Dimensions			
	A	B	C	D
25 757 14	.104"	.619"	1.227"	2.164"
25 757 15	.104"	1.416"	1.289"	3.00"
25 757 16	.104"	1.447"	1.227"	3.00"
25 757 17	.122"	1.073"	1.227"	2.66"